

Aim:

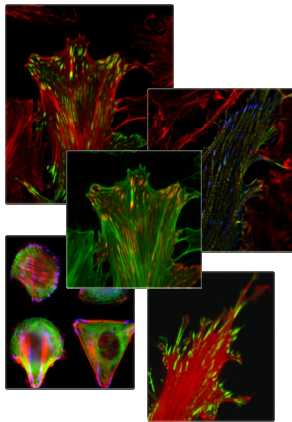
To deliver a Research Data Management Infrastructure (RDMI) at the University of Manchester, including a Research Data Management Policy, together with a supporting Service and the necessary human infrastructure to provide the Research Data Management needs across the institution.

Rationale:

- 1) Researchers need to be supported to manage their data well and comply with legal and funder policies.
- 2) Funders want to ensure public money spent on research is maximised →this means ensuring research data is preserved for reuse.
- 3) Potential future value in data assets needs to be preserved.

Background

- 18 month project time frame starting Oct 2011
- MiSS builds on the previous experience of the JISC funded MaDAM project.



Up to 12 different file types
From 0.5MB to 17GB/file
'Raw data'

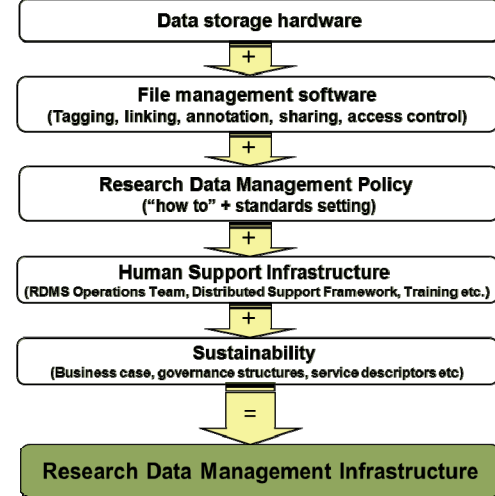
Technical Architecture

Building on the technical services created by MaDAM, the aim is to refine, extend and integrate them into the Manchester Working Environment (the University's strategic information system platform).

Institutional Research Data Management Policy

MiSS will define a policy for data management, preservation and publication and put the policy into practice through the University of Manchester's Research Data Management Working Group; a high-powered group consisting of AVPs for Research and Data Integrity, Deputy Secretary of the University, Director of John Rylands University Library (JRUL), Director of IT Services, Director of Research and Business Engagement Support Services, Head of IT Services for Research, Head of Digital Technology and Services at JRUL, eScholar Manager, TRAC Manager, and members of the MiSS project team.

Aim: Research Data Management Infrastructure

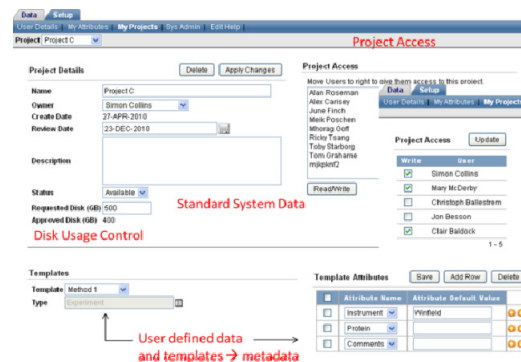


User Communities

To ensure that the MiSS RDMI is capable of meeting the needs of all University of Manchester researchers, user case groups, consisting of key researchers and core facilities have been recruited from each faculty, with requirements across the full research data lifecycle:

- Engineering and Physical Sciences: Henry Moseley X-ray Imaging Facility, and University of Manchester's Diamond Light Source beamline project.
- Life Sciences: The Bioinformatics Core Facility.
- Medical and Human Sciences: The Northwest Institute for Bio-Health Informatics (NIBHI).
- Humanities: The Cathie Marsh Centre for Census and Survey Research (CCSR).

These groups will also form the basis of a user committee which will encompass other interested parties from around the University.



Human Support Infrastructure and Sustainability

The aim is to investigate and establish human support infrastructure requirements for an effective RDMI:

- Research Data Management Service Operations Team: Establish the service centre and liaison structures.
- Distributed Support Framework required to support RDMI throughout the institution (e.g., Research Office, IT Services, Trainers, School level contacts, Manchester eScholar etc).
- Training courses and materials
- Governance