

# Building a Research Data Management Training Community

Collaboratively improving and innovating Research Data Management (RDM) training

# What? Why?

what

- A cross-institutional, international group of data supporters
- Collaboratively investigating and developing metrics
- Measuring and monitoring effectiveness of RDM training.

why

- We are responding to a need for common metrics to evaluate the quality of RDM training.
- Together we want to build an initiative which benefits the whole community, and will contribute to the improvement of the quality of RDM training.



# HOW

## Collecting input:

Working collaboratively, we evaluated existing feedback forms from participating trainers around the world used to assess the quality of their training.



## Building a metrics framework:

We created tools for objective assessment of RDM training quality and agreed on six questions that everyone should embed in their feedback forms.



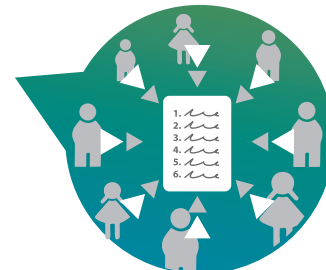
## Implementing metrics :

The six questions will be incorporated into the RDM training evaluation forms of the cooperating institutes.



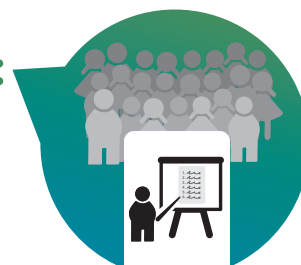
## Fine-tuning metrics:

The cooperating institutions will share their training materials and anonymised feedback which will be used to fine-tune the evaluation metrics and to learn from each other's practices.



## Jointly improving training quality:

The RDM evaluation metrics project lives on the participation of institutes who are willing to establish a common solution to improve the quality of our RDM training.



step 5



**Info:**  
Ellen Verbakel - [P.M.Verbakel@tudelft.nl](mailto:P.M.Verbakel@tudelft.nl)  
Rosie Higman - [rosie.higman@manchester.ac.uk](mailto:rosie.higman@manchester.ac.uk)  
Lauren Cadwallader - [lc340@cam.ac.uk](mailto:lc340@cam.ac.uk)  
Hardy Schwamm - [h.schwamm@lancaster.ac.uk](mailto:h.schwamm@lancaster.ac.uk)  
<https://osf.io/nzer8/>

# We Need You

rdnl research data netherlands

MANCHESTER 1824  
The University of Manchester

UNIVERSITY OF CAMBRIDGE  
Lancaster University